

Southern Alleghenies Rural Planning Organization
Annual Listing of Obligated Projects Report
Federal Fiscal Year 2023



Table of Contents

A. Report Background	2
B. Purpose of the Report	2
C. Southern Alleghenies RPO Overview	3
D. Long Range Transportation Plan	3
E. Transportation Improvement Program	4
F. Summary of Obligated Projects	4
G. Funding Sources	5
H. Table Definitions	7
2023 Annual List of Obligated Projects	9

A. Report Background

The Fixing America's Surface Transportation Act (FAST Act) was signed into law on December 4, 2015. This federal transportation funding bill authorizes federal highway, highway safety, transit, and rail programs. The FAST Act also establishes that planning organizations must publish a list of projects that have been obligated annually. The federal regulation states that: "An annual listing of projects, including investments in pedestrian walkways and bicycle transportation facilities, for which federal funds have been obligated in the preceding program year shall be published or otherwise made available through the cooperative effort of the state, public transportation operator(s), and metropolitan planning organization. The listing shall be consistent with the categories identified in the TIP."

B. Purpose of the Report

The purpose of the report is to outline Federally funded obligations in the Southern Alleghenies Rural Planning Organization (RPO) region that transpired during the period of October 1, 2022, to September 30, 2023, or Federal Fiscal Year (FFY) 2023.

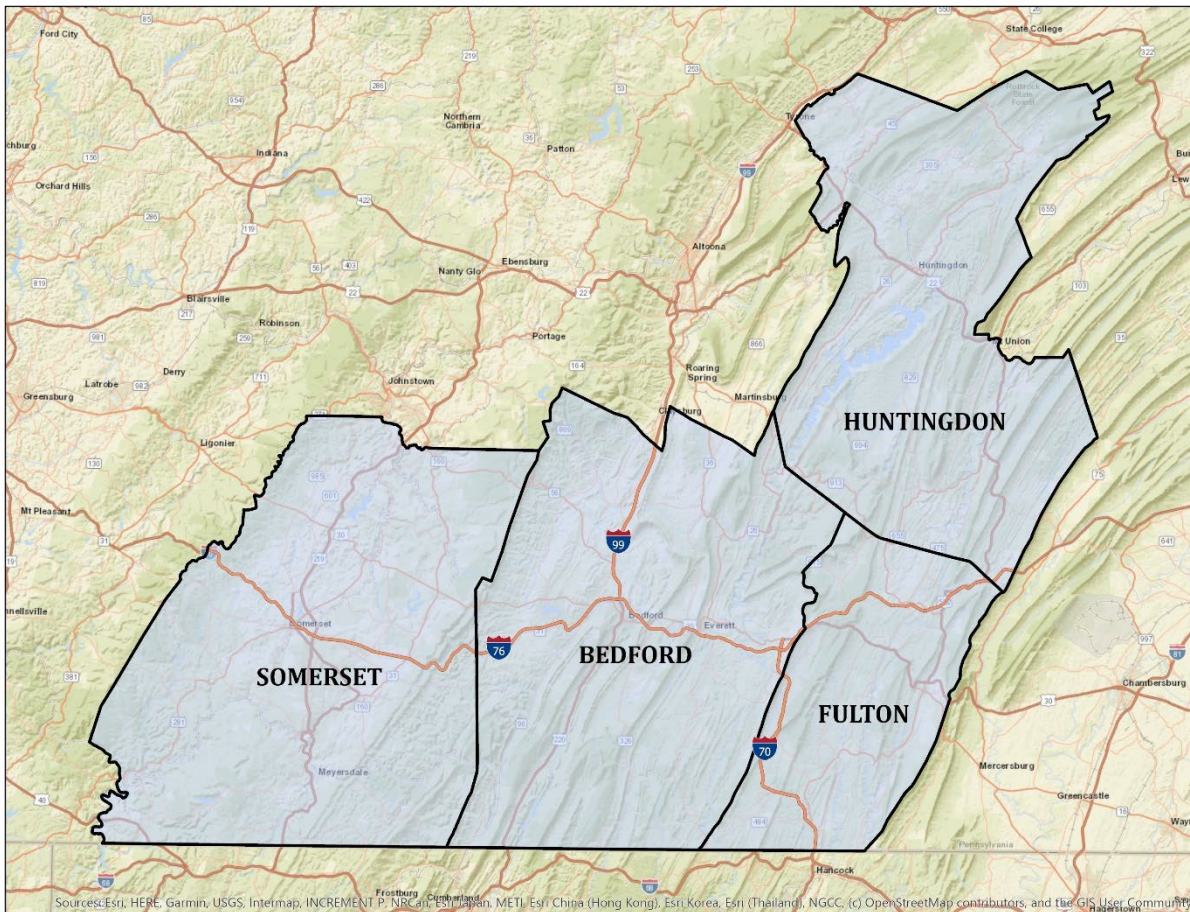
The Federal Highway Administration (FHWA) defines "obligation" as a legal commitment by the Federal government "to pay or reimburse a State or other entity for the Federal share of a project's eligible costs." Obligation occurs when FHWA approves the project and executes the project agreement, not when cash (or an electronic payment) is transferred. The obligation of funds for projects does not necessarily mean that projects are initiated or completed during this year, but that the legal commitment was made to reimburse State DOT's for eligible costs. Also, the obligated amounts reflected in this report may not be equal to the final or total project costs as federal funds are but only one source of funds and other funds such as State and Local funds may likely be involved as well.

Funding can also be "de-obligated" from projects in response to lower than expected costs, project cancellation, or other factors, and these released resources are often redirected to other projects. De-obligation occurs when PennDOT reduces or removes a project's federal funds. De-obligation can occur for several reasons:

- Bids come in lower than the amount obligated for a project. If so, after the project bid is accepted, the federal funds are reduced and shown as a negative obligation.
- On Advance Constructed projects, amounts being obligated on such projects may need to be adjusted, resulting in the de-obligation of funds. Advance construction allows projects to be funded with Federal-aid dollars later.
- A project phase (e.g. right-of-way, design, construction) is closed out causing funds remaining in that phase to be de-obligated. This action must happen before the funds can be obligated to another phase of the same project.
- After a project has been completed and all bills have been paid, any remaining obligation authority is returned to the Federal government and shown as a de-obligation, or negative number.
- If a project will not be completed previously obligated funds for the project are de-obligated.

C. Southern Alleghenies RPO Overview

The Southern Alleghenies Planning and Development Commission (SAP&DC) is a Local Development District (LDD) that implements a Rural Transportation Work Program for the counties of Bedford, Fulton, Huntingdon, and Somerset. On April 2, 2003, an Intergovernmental Agreement was signed between the Pennsylvania Department of Transportation (PennDOT) and SAP&DC designating SAP&DC as a Regional Planning Organization (RPO).



The RPO has established a Rural Transportation Technical Committee and a Rural Transportation Coordinating Committee to develop and oversee the development of the region’s Long Range Transportation Plan (LRTP), Transportation Improvement Program (TIP), and other transportation planning documents. The Technical Committee is responsible for the creation and analyses of transportation plans and programs and makes recommendations to the Coordinating Committee. The Coordinating Committee establishes transportation policy and makes final decisions on courses of action. The Southern Alleghenies RPO Policies and Procedures, which includes committee membership, can be found in the appendices.

D. Long Range Transportation Plan (LRTP)

This plan is financially constrained and is a springboard for identifying and recommending projects for inclusion in the state’s Twelve-Year Transportation Program and the Statewide Transportation

Improvement Program. The Transportation Improvement Program (TIP) is derived from the Long Range Transportation Plan and is a listing of federally funded projects to be completed during the first four-year period of the plan.

The 2022-2042 LRTP was adopted in October of 2022. The Southern Alleghenies RPO delineates how available and projected transportation funds will be spent over a 20-year period. The Long Range Transportation Plan serves the following purposes:

- Outlines the “vision” of the future transportation picture through a series of goals and objectives
- Describes the transportation projects that make up the Plan
- Outlines a financial plan that describes the proposed source of funding and establishes a time frame for implementation
- Includes projects that are expected to be let with the current available funding and often includes other regional needs and wants in the form of projects that may currently be unfunded
- Describes how the plan will be updated and provides for new initiatives to be undertaken
- Provides for inclusion of comments, concerns, and the vision of the general public

E. Transportation Improvement Program (TIP)

Every two years, the Southern Alleghenies RPO works in partnership with PennDOT, local transit providers, and area local officials to identify priority transportation needs and develop a new TIP to address these needs over the next four-year period. The TIP details the planned expenditure of federal funds and state capital funds for specific programs and projects within specified limits of fiscal constraint. To be included on the TIP, programs and projects must be included on the Southern Alleghenies 2042 LRTP or addressed through reserve line items included on the 2042 LRTP. The TIP years are based on the federal fiscal year, which extends from October 1 to September 30. The Southern Alleghenies RPO works to educate the public on transportation programs and regularly solicits public input on transportation priorities through public meetings, press releases, comment forms on websites, and other methods.

Projects placed on the TIP address a variety of transportation modes, including improvements to roadways, bridges, transit, bicycle and pedestrian facilities, rail freight facilities, and airports. In recent years, system maintenance has required a growing share of the Commonwealth of Pennsylvania’s limited resources. Consequently, the TIP places high priority on projects that rehabilitate, reconstruct, and renew the existing and aging transportation infrastructure. Consideration for all new projects on the TIP is initiated through the PennDOT Connects, Southern Alleghenies RPO, and County municipal and public involvement processes.

F. Summary of Obligated Projects

During the period of October 1, 2022, to September 30, 2023, the Southern Alleghenies RPO saw a total of **\$64,688,500** in obligated funding for projects, as well as \$2,229,508 in de-obligated funding. The investments were made for projects in the following phases:

FY 2023 Funding Obligated by Project Source	
Project Phase	Funding Obligated
Preliminary Engineering (PE)	\$5,075,642
Construction (CON)	\$38,820,102
Right of Way (ROW)	\$20,645,149
Utilities (UTL)	\$66,800
Final Design (FD)	\$71,807
Study	\$0
Planning/Research/Administrator (PRA)	\$0
Total Obligated	\$64,688,500

G. Funding Sources

National Highway Performance Program (NHPP) Funds: Used for construction of new facilities, maintenance, and support of the National Highway System (NHS).

Highway Safety Improvement Program (HSIP) Funds: Used for roadway design features or hardware, such as guiderails, traffic signals, rumble strips, signage, etc., that help reduce crashes or minimize their severity. The Highway Safety Improvement Program (HSIP) requires a data-driven, strategic approach to improving safety on all public roads that focuses on performance.

Surface Transportation Block Grant Program Set-Aside (former Transportation Alternatives Program) (TAP, TAU): Used for projects that provide access for pedestrians, bicycles, and other non-motorized forms of transportation including off-road trails or on-street bicycle/pedestrian facilities.

Highway-Rail Grade Crossing Safety (RRX): Funding for this program will continue to be managed on a statewide basis with the programming of funds occurring centrally by the Department of Transportation. Centralized management of this program allows for a formalized project selection process and promotes higher utilization of funding and the ability to initiate higher cost projects.

Surface Transportation Program (STP) Funds: Flexible funding used for federal-aid highway, bridge and tunnel projects on any public road, pedestrian and bicycle infrastructure, and transit capital projects, including intercity bus terminals.

Off System Bridges (BOF) Funds: Used for bridges greater than 20 feet that are located on Rural Minor Collectors, Rural Local Roads or Urban Local Roads.

Appalachia Development Highway (APD/APL): A balance of federal funds from SAFETEA-LU remain available and may only be used for eligible capital improvements on routes that have been designated as Appalachia highway corridors and that are included in the most recent Appalachia Development Highway System (ADHS) Cost to Complete Estimate. Funding may also be utilized for Local Access Road projects that are identified and approved in coordination with the Department of Community and Economic Development (DCED) and the Appalachian Regional Commission (ARC).

Transportation Infrastructure Investment Fund (TIIF): Reserve \$25 million per year in state funds for transportation improvements associated with economic development opportunities.

Decisions on how to utilize this funding will be at the discretion of the Secretary of Transportation in consultation with the Governor.

Statewide Transit Flex: Reserve \$25 million per year in federal funds to flex to transit in accordance with agreements reached in conjunction with the enactment of Pennsylvania Act 3 of 1997.

Statewide Line Items: Reserve an average of \$41 million per year in federal and state highway and bridge funds for State and Local Bridge Inspection, Environmental Resource Agencies, and other related statewide line items.

Interstate Management (IM) Program: This program provides funding to rehabilitate, restore, and resurface the Interstate System. Reconstruction is also eligible if it does not add capacity.

Discretionary Funding (Spike): Twenty percent of the Surface Transportation Block Grant Program (STP) funding and 15% of available state highway (capital) and bridge funds (required by Act 89) will be held in reserve. The Secretary of Transportation, in consultation with the State Transportation Commission (STC), will distribute the funding to offset the impact of high-cost projects or programs ("spikes") that are beyond a region's allocation, or other statewide priorities.

Bridge Funding Formula (State): Bridge funding will be allocated to planning regions based on square feet of deck area of poor condition bridges and square feet of deck area for all bridges. Federally funded bridge projects will continue to utilize NHPP and STP funds, which is reflected using bridge factors in the distribution formulas for those categories. Bridge rehabilitation, replacement, and preservation remain a Department priority.

Highway (Capital) Funding (State): After the 15% discretionary funding set aside, remaining highway funds will be distributed based upon each region's share of highway needs.

Surface Transportation Block Grant Program-Urban (STU): Funding is allocated to each region with populations greater than 200,000 based on the current federal formula. The federal formula sub-allocates STP funds within each state between urbanized areas with populations greater than 200,000 and the rest of the state in proportion to their relative share of the total state population as well as the total state urbanized area population in proportion to all other states total urbanized area population.

Congestion Mitigation and Air Quality (CMAQ): Provides a funding source to State and local governments for transportation projects and programs to help meet the requirements of the Clean Air Act. Funding is available to reduce congestion and improve air quality for areas that do not meet the National Ambient Air Quality Standards for ozone, carbon monoxide, or particulate matter (nonattainment areas), as well as former nonattainment areas that are now in compliance (maintenance areas).

National Highway Freight Program (NFP): Funding for this program will be reserved for the Interstate Management Program.

The following are categories of funding that have limitations on how and where they may be used and will be considered as additional funds to the region:

Special Federal Funding (SXF): Earmarked for specific projects that were authorized by ISTEA, TEA-21, SAFETEA-LU, and other federal legislation.

All Discretionary Federal Funding: Most discretionary programs were not continued in MAP-21 or the FAST Act. Carryover funds exist in some categories that can be used for the specific awarded projects as long as funds remain available for obligation.

Appropriation 179: State revenue was established under Act 26 of 1991. The funds were provided to PennDOT for distribution. A policy was established to provide funds to underprivileged counties to cover the local match on county owned bridges. Act 89 of 2013 changed the distribution of these funds. Funds now go directly to the Counties through liquid fuels payments under a new Appropriation code. This began in Calendar Year (CY) 2014. The governor's budget office has allowed PennDOT to lapse the remaining balance of Appropriation 179 funds to be utilized on existing projects with agreements already in place until the balance is exhausted.

Local and Private Funding: Local and private funding is not included in the tables and can be considered additional funding above that which is shown, if documentation supports, the funds are reasonably expected to be made available.

H. Table Definitions

All of the obligated projects are listed in ascending order by county and the State Route number:

MPMS stands for Multi-modal Project Management System number. It is an inventory of Highway/Bridge and Rail/Freight projects that contains information about project phases, funding, and status. Additional project information can be found at PennDOT's One Map interactive online map and searching by the MPMS # as the Asset ID.

Project Title is the title of the project.

Project Desc is a brief description of the project developed by MPMS.

Project Admin indicates the entity that will administer the project.

Phase

- PE (Preliminary Engineering);
- CON (Construction);
- ROW (Right of Way);
- UTL (Utilities);
- FD (Final Design);
- Study;
- PRA (Planning/Research/Administrator).

County is the county in which the project is located.

SR is the State Route number.

Obligation is the amount of obligated federal funds for the FFY of this report.

Prog. Total is the amount of federal funds programmed on the TIP for the project.

Fed. Funds Remaining is the amount of federal funding remaining and available for subsequent years.

Abbreviations used in Project Titles:

BCT – Breakaway Cable Terminal

Br or Brdg – Bridge

Bus. Dist. – Business District

Clvrt - Culvert

CMB – Cable Median Barrier

Co – County

Env. - Environmental

GR – Guiderail

HFST – High Friction Surface Treatment

HSIP – Highway Safety Improvement Program

Imp – Improvement

ITS – Intelligent Transportation System

NS – Norfolk Southern Railroad

Ph – Phase

Rd – Road

RPO – Rural Planning Organization

RS – Rumble strips

SB – Southbound

SR – State Route

Tpike – Turnpike

Trib – Tributary

Trk – Truck

TSMO – Transportation Systems Management and Operations

Xing – Crossing

Annual Listing of Obligations Report, Federal Fiscal Year 2023

MPMS	PROJECT TITLE	PROJECT DESCRIPTION	PROJECT ADMIN	PHASE **	COUNTY	STATE ROUTE	OBLIGATION*	PROG. TOTAL	FED FUNDS REMAINING
							FFY 2022	FFY 2023 TO 2026	
116673	S Alleghenies Rumbles and HFST	High Friction Surface Treatment on various State Routes in the Southern Alleghenies RPO Region in Bedford, Fulton, Huntingdon and Somerset Counties	PENNDOT	Construction	Bedford	26	\$845,000	\$925,000	\$80,000
21588	PA 26 over Ravers Run	Bridge replacement on PA 26 over Ravers Run in Liberty Township, Bedford County	PENNDOT	Preliminary Engineering	Bedford	26	\$150,000	\$300,000	\$150,000
116671	S Alleghenies HFST and Signal Enhancements	Signal upgrades, pavement markings, delineation, and high friction surface treatment on PA 56 at PA 160 Intersection; 24th St Intersection and curve east of 12th St., in Windber Borough, Somerset County. High friction surface treatment on PA 26 near the intersection with SR 1019 (Woodcock Valley Road) in Hopewell Township, Bedford County. On US 30 over Raystown Branch Juniata River in Bedford Township, Bedford County. On PA 31 near the intersection with PA 96 in Harris Township, Bedford County. On SR 1019 (Woodcock Valley Road) near the intersection with PA 26 in Hopewell Township, Bedford County. On US 522 near Ten Mile Run in Dublin Township, Fulton County. On US 22 at the intersection with PA 453 in Morris Township, Blair County. On PA 453 at the intersection with US 22 in Morris Township, Blair County.	PENNDOT	Construction	Bedford	30	\$1,771,000	\$1,811,000	\$40,000

Annual Listing of Obligations Report, Federal Fiscal Year 2023

110468	PA 56 Pleasantville Mountain Safety Improvements	<p>Safety improvements on PA 56 from Summit Drive to east of Peggy Westover Curve in Ogle Township, Somerset County and West St. Clair Township, Bedford County.</p> <p>Improvements include: 1) Construction of a truck brake check pull off between Summit Drive and the Bedford County line in Ogle Township, Somerset County 2) High friction surface treatment on two curves and lane striping between the Somerset County line and Peggy Westover Curve in West St. Clair Township, Bedford County 3) Installation of truck speed warning signs along Peggy Westover Curve in West St. Clair Township, Bedford County 4) Approximately 3,000 feet of slope stabilization in West St. Clair Township, Bedford County</p>	PENNDOT	Construction	Bedford	56	\$630,000	\$630,000	\$0
107205	PA 56 - PA 96 to SR 4032	Resurfacing on PA 56 from PA 96 to SR 4032 (Reynoldsdale Road) in West St Clair and East St Clair Townships, Bedford County.	PENNDOT	Utility	Bedford	56	\$26,000	\$26,000	\$0
118419	2024 SA Interchange Lighting	Upgrading to LED lighting on the I-99 Imler interchange, US 219 Jerome interchange, US 219 Hollsopple interchange, and I-70 Fulton Rest Stop in Brush Creek Township, Fulton County, Conemaugh Township, Somerset County, and King Township, Bedford County. The project will replace street lighting with energy-efficient alternatives.	PENNDOT	Construction	Bedford	99	\$899,163	\$1,914,247	\$1,015,084

Annual Listing of Obligations Report, Federal Fiscal Year 2023

117770	2023 Bedford County Bridge Preservation	<p>Bridge preservation activities:</p> <p>US 220 over Evitts Creek in Cumberland Valley Township, Bedford County. Preservation activities over Evitts Creek include full paint of steel superstructure, Latex Modified Concrete (LMC) overlay, minor roadway paving, and guide rail upgrades.</p> <p>PA 915 over Raystown Branch of Juniata River in Broad Top and Hopewell Borough, Bedford County. Preservation activities over Raystown Branch of Juniata River include pedestrian railing repair.</p> <p>SR 2002 (Millers Corner Road) over Wilson Creek in Southampton Township, Bedford County. Preservation activities over Wilson Creek include Latex Modified Concrete (LMC) overlay, minor roadway paving, and guide rail upgrades.</p>	PENNDOT	Construction	Bedford	220	\$1,287,870	\$1,587,869	\$299,999
21570	Bobs Creek Bridge	Bridge improvement on PA 869 (Burnt House Road) over Bobs Creek in Pavia Township, Bedford County	PENNDOT	Preliminary Engineering	Bedford	869	\$250,000	\$250,000	\$0
21465	SR 1015 Beaver Crk Bridge	Bridge improvement on SR 1015 (Hershberger Road) over Beaver Creek in South Woodbury Township, Bedford County	PENNDOT	Preliminary Engineering	Bedford	1015	\$100,000	\$100,000	\$0
118873	Vulnerable Rd Users: Tier1 & Tier2 Signal Upgrades	Districtwide signal upgrades. The upgrades are grouped into Tier 1 and Tier 2. Tier 1 includes signalized intersections that require countdown signals only. Additionally, to tier 1, new push buttons are assumed to be installed. Tier 2 includes signalized intersections that will need the addition of at least one 4ft stub pole; in addition to countdown signals and new push buttons.	PENNDOT	Preliminary Engineering	Bedford	4008	\$100,000	\$100,000	\$0

Annual Listing of Obligations Report, Federal Fiscal Year 2023

118873	Vulnerable Rd Users: Tier1 & Tier2 Signal Upgrades	Districtwide signal upgrades. The upgrades are grouped into Tier 1 and Tier 2. Tier 1 includes signalized intersections that require countdown signals only. Additionally, to tier 1, new push buttons are assumed to be installed. Tier 2 includes signalized intersections that will need the addition of at least one 4ft stub pole; in addition to countdown signals and new push buttons.	PENNDOT	Construction	Bedford	4008	\$297,013	\$310,000	\$12,987
117023	SR 4019 Oppenheimer Run Bridge	Bridge improvement on SR 4019 (Reynoldsdale Road) over Oppenheimer Run in Bedford and East Saint Clair Townships, Bedford County	PENNDOT	Preliminary Engineering	Bedford	4019	\$103,000	\$103,000	\$0
109135	T-613 Colebaugh Road Bridge	Bridge improvements on structure carrying Colebaugh Road (T-613) over Scrubgrass Creek near the intersection of Scrubgrass Road (SR 4027) in King Township, Bedford County.	PENNDOT	Construction	Bedford	7212	\$8,191	\$0	\$(8,191)
96035	T-317 Mtn Road Bridge	Bridge replacement on T-317 (Mountain Road) over Fifteen Mile Run approximately 528 feet West of the Village of Artemas in Mann Township Bedford County	PENNDOT	Construction	Bedford	7216	\$752,000	\$852,000	\$100,000
96035	T-386 Akers Road Bridge	Rehabilitation of bridge carrying Akers Road (T-386) over Shaffer Creek on the East Providence/Monroe Township Line in Monroe Township, Bedford County.	PENNDOT	Construction	Bedford	7217	\$12,561	\$0	\$(12,561)
21611	T-705 Over Three Springs Run 1	Bridge Improvement on T-705 (Pine Hill Road) over Three Springs Run in South Woodbury Township, Bedford County.	PENNDOT	Preliminary Engineering	Bedford	7221	\$260,000	\$260,000	\$0
117087	T-705 Over Three Springs Run 2	Bridge Improvement on T-705 (Pine Hill Road) over Three Springs Run in South Woodbury Township, Bedford County.	PENNDOT	Preliminary Engineering	Bedford	7221	\$216,000	\$216,000	\$0

Annual Listing of Obligations Report, Federal Fiscal Year 2023

117078	Pipe Replacement from Hurricane Ida on SR 30	Pipe replacement on SR 30 (Segment 0020 Offset 0493) in Licking Creek Township, Fulton County	PENNDOT	Construction	Fulton	30	\$42,734	\$42,734	\$0
117633	I-70 Curve Warning System	Installation of new ITS devices at various locations on I-70 in Brush Creek Township, Fulton County.	PENNDOT	Construction	Fulton	70	\$266,690	\$250,822	\$37,362
117634	I-70 Intelligent Transportation System (ITS) Gap	Installation of new ITS devices at various locations on I-70 in Brush Creek and Bethel Townships, Fulton County.	PENNDOT	Construction	Fulton	70	\$1,007,633	\$1,020,176	\$12,543
22830	PA 655/Barnett's Run	Bridge improvement on PA 655 (Thompson Road) over Barnetts Run in Belfast Township, Fulton County	PENNDOT	Preliminary Engineering	Fulton	655	\$100,000	\$100,000	\$0
22846	PA 915 over UNT to Laurel Fork	Bridge replacement on PA 915 (North Valley Road) over an unnamed tributary to Laurel Fork in Wells Township, Fulton County	PENNDOT	Preliminary Engineering	Fulton	915	\$118,500	\$118,500	\$0
117352	SR 1003 Peach Orchard Rd over US 30	Bridge improvement on SR 1003 (T-516 Peach Orchard Road) over US 30 (Lincoln Highway) in Todd Township, Fulton County	PENNDOT	Preliminary Engineering	Fulton	1003	\$30,000	\$30,000	\$0
109201	T-372 Ravensburg Road Bridge	Bridge improvements on structure carrying Ravensburg Road (T-372) over Cove Creek north of the intersection of US Route 522 in Ayr Township, Fulton County.	PENNDOT	Construction	Fulton	7210	\$4,013	\$0	\$(4,013)
22812	T-313 Sawmill Hollow	Bridge improvement on T-313 (Hill Road) over Tributary to Sawmill Hollow Run in Bethel Township, Fulton County	PENNDOT	Preliminary Engineering	Fulton	7203	\$200,000	\$200,000	\$0
109202	T-404 Reunion Ground Road Bridge	Bridge improvements on structure carrying Reunion Ground Road (T-404) over Licking Creek near the intersection of PA 655 in Licking Creek Township, Fulton County.	PENNDOT	Construction	Fulton	7206	\$758	\$0	\$(758)
109203	T-331 East Pittman Road Bridge	Bridge improvements on structure carrying East Pittman Road (T-331) over Licking Creek near the intersection of Gem Bridge Road (SR 2003) in Thompson Township, Fulton County.	PENNDOT	Construction	Fulton	7208	\$16,384	\$0	\$(16,384)

Annual Listing of Obligations Report, Federal Fiscal Year 2023

114179	T-330 Zachs Ridge Road	Bridge replacement on T-330 (Zachs Ridge Road) over McKees Run in Union Township Fulton County. This project will also include updating guiderail and approach roadway updates as needed.	PENNDOT	Preliminary Engineering	Fulton	7210	\$232,000	\$232,000	\$0
110104	T-340 Fairview Rd over Indian Grave Run	Bridge replacement on T-340 (Fairview Road) over Indian Grave Run in Union Township Fulton County.	PENNDOT	Construction	Fulton	7210	\$1,034,084	\$1,034,084	\$0
92696	PA 26 over Muddy Run Clvrt	Replacement of culvert carrying PA 26 over Muddy Run near the intersection of 7th Street in Huntingdon Borough, Huntingdon County.	PENNDOT	Construction	Huntingdon	26	\$1,955	\$1,955	\$0
108316	US 522 - Keystone Rd to Mifflin County Line	Resurfacing on US 522 from T-507 (Keystone Road) to Mifflin County Line in Shirley Township and Mount Union Borough Huntingdon County	PENNDOT	Construction	Huntingdon	522	\$4,461,491	\$4,461,491	\$0
49336	Lick Run Bridge	Bridge replacement on SR 2004 (Meadow Gap Road) over Lick Run near the intersection of T-334 (Fleck Road) in Springfield Township, Huntingdon County	PENNDOT	Utility	Huntingdon	2004	\$20,000	\$20,000	\$0
109205	T-358 Covered Bridge Road Bridge	Bridge improvements on structure carrying Covered Bridge Road (T-358) over Shade Creek near the intersection of US Route 522 in Cromwell Township, Huntingdon County.	PENNDOT	Construction	Huntingdon	7206	\$2,119	\$0	\$(2,119)
114181	T-573 Wilson Road	Bridge replacement on T-573 (Wilson Road) over Three Springs Creek in Cromwell Township Huntingdon County	PENNDOT	Final Design	Huntingdon	7206	\$152,000	\$152,000	\$0
114181	T-573 Wilson Road	Bridge replacement on T-573 (Wilson Road) over Three Springs Creek in Cromwell Township Huntingdon County	PENNDOT	Utility	Huntingdon	7206	\$20,000	\$20,000	\$0
114181	T-573 Wilson Road	Bridge replacement on T-573 (Wilson Road) over Three Springs Creek in Cromwell Township Huntingdon County	PENNDOT	Right of Way	Huntingdon	7206	\$20,000	\$20,000	\$0

Annual Listing of Obligations Report, Federal Fiscal Year 2023

117085	T-316 Appleby Rd Shade Creek Bridge	Bridge Improvement on T-316 (Appleby Road) over Shade Creek in Dublin Township, Huntingdon County	PENNDOT	Preliminary Engineering	Huntingdon	7207	\$200,000	\$300,000	\$100,000
110100	T-529 Miller Rd over Laurel Run	Bridge Improvement on T-529 (Miller Road) over Laurel Run in Jackson Township, Huntingdon County	PENNDOT	Construction	Huntingdon	7211	\$819,013	\$819,013	\$187
119696	September 11th Trail - Garrett to Berlin	Multi-use trail and bridge construction off-road alignment from Garrett to Berlin in Brothersvalley & Summit Townships, and Garrett Borough, Somerset County	PENNDOT	Preliminary Engineering	Somerset		\$600,000	\$600,000	\$0
110443	US 30 - US 219 to PA 281	Resurfacing on US 30 from US 219 to PA 281 Quemahoning Township and Stoystown Borough, Somerset County.	PENNDOT	Construction	Somerset	30	\$2,750,000	\$2,750,000	\$0
92711	Addison Resurface	Resurfacing of US Route 40 from the Maryland line to the Fayette County Line in Addison Township and Addison Borough, Somerset County.	PENNDOT	Construction	Somerset	40	\$720,950	\$720,950	\$0
110427	South Berlin PA 160 Buffalo Creek Bridge	Bridge improvement on PA 160 (Cumberland Highway) over Buffalo Creek approximately 0.25 north of Glennoris School Road, Brothersvalley Township, Somerset County	PENNDOT	Preliminary Engineering	Somerset	160	\$650,000	\$650,000	\$0
118337	2021 Main Street School Safe Route	Project Sponsor: Berlin Borough Project selected during the 2021 Statewide TA Set-Aside Round Sidewalk and curbing on PA 160 from Hay Street to Tenth Avenue in Berlin Borough, Somerset County	PENNDOT	Construction	Somerset	160	\$600,000	\$1,000,000	\$400,000
23620	219 Garrett Erthwck Ln Itm	Southern terminus of 4-lane in Somerset Township through Brothers Valley Township to the northern terminus of the Meyersdale Bypass near Pony Farms in Summit Township.	PENNDOT	Right of Way	Somerset	219	\$20,633,349	\$20,633,349	\$0

Annual Listing of Obligations Report, Federal Fiscal Year 2023

117769	2023 SA Bridge Painting	Bridge improvements of two structures on US 219 over the Pennsylvania Turnpike in Somerset Township, Somerset County.	PENNDOT	Construction	Somerset	219	\$1,979,894	\$1,979,894	\$254,506
117766	2023 SA Bridge Epoxy Overlay	Bridge preservation activities in various municipalities in Fulton, Huntingdon, and Somerset Counties	PENNDOT	Construction	Somerset	219	\$1,155,600	\$1,155,600	\$0
113442	PA 403 - US 219 to PA 985	Resurfacing of PA 403 (Tire Hill Road) from US 219 (Flight 93 Memorial Highway) to the Cambria County Line, two structure replacements, three structure preservations, one structure removal, two traffic signals, and three geotechnical treatments, within Conemaugh Township, Somerset County.	PENNDOT	Construction	Somerset	403	\$16,264,991	\$17,534,745	\$1,269,754
117015	PA 601 Barclay Run Bridge	Bridge Improvement of the bridge carrying PA 601 over Barclay Run in Somerset Borough, Somerset County	PENNDOT	Preliminary Engineering	Somerset	601	\$100,000	\$100,000	\$0
118338	Garrett Borough Streetscape Project	Project Sponsor: Redevelopment Authority of Somerset County Project selected during the 2021 Statewide TA Set-Aside Round Sidewalk, curbing, ADA ramps, and decorative street lighting on PA 653 from Center Street to Pine Street and on Walker Street from Jackson Street to Monroe Street in Garrett Borough, Somerset County	PENNDOT	Construction	Somerset	653	\$600,000	\$860,000	\$260,000
116670	Stutzmantown Rd Intrsectn Improvements	Safety Improvement at Intersection of SR 1001 (Stutzman Town Rd) and T-546 (Pleasant Hill RD), ¼ mile north of PA 31in Somerset Township, Somerset County	PENNDOT	Construction	Somerset	1001	\$176,500	\$176,500	\$0
116999	SR 1017 Segment 70 Over Breastwork Run	Bridge Improvement on SR 1017 (New Baltimore Road) over Breastwork Run in Allegheny Township, Somerset County.	PENNDOT	Preliminary Engineering	Somerset	1017	\$275,000	\$275,000	\$0

Annual Listing of Obligations Report, Federal Fiscal Year 2023

117000	SR 1017 Segment 80 Over Breastwork Run	Bridge Improvement on SR 1017 (New Baltimore Road) over Breastwork Run in Allegheny Township, Somerset County.	PENNDOT	Preliminary Engineering	Somerset	1017	\$275,000	\$275,000	\$0
74470	Gladdens Run BR	Bridge Improvement on SR 2013 (Palo Alto Road) over Gladdens Run in Southampton Township, Somerset County.	PENNDOT	Preliminary Engineering	Somerset	2013	\$450,000	\$450,000	\$0
23596	Blue Lick Ck Trib Br	Bridge Improvement of the bridge carrying SR 2026 (Berkleys Mills Road) over Blue Lick Creek in Summit Township, Somerset County.	PENNDOT	Preliminary Engineering	Somerset	2026	\$100,000	\$100,000	\$0
74487	Smith Run Br	Bridge replacement on SR 3007 (Humbert Road) over Smith Run in Lower Turkeyfoot Township, Somerset County.	PENNDOT	Preliminary Engineering	Somerset	3007	\$100,000	\$100,000	\$0
91446	Humbert Red Run 1	Bridge Improvement of the bridge carrying SR 3007 (Humbert Road) over Red Run near the intersection of T-446 (Wine-O Road) in Lower Turkeyfoot Township, Somerset County	PENNDOT	Preliminary Engineering	Somerset	3007	\$100,000	\$100,000	\$0
23458	Middle Creek Bridge	Bridge Improvement of the bridge carrying SR 3029 (Cooper Kettle Highway over Middle Creek near the intersection of T-703 (Chippewa Road) in Milford Township, Somerset County.	PENNDOT	Preliminary Engineering	Somerset	3029	\$425,000	\$425,000	\$0
110129	Blacks Hill Rd Beaver Dam Crk	Bridge replacement on SR 4023 (Black Hills Road) over Beaver Dam Creek near a Borough Road (Mountain Road) in Jennerstown Borough, Somerset County.	PENNDOT	Construction	Somerset	4023	\$1,166,820	\$1,166,820	\$0
23508	T-719 Over Brush Creek	Bridge Improvement on T-719 (Schoolhouse Road) over Brush Creek in Northampton Township, Somerset County.	PENNDOT	Preliminary Engineering	Somerset	7216	\$108,000	\$312,000	\$204,292

Annual Listing of Obligations Report, Federal Fiscal Year 2023

23357	T-504 Fike Bridge	Bridge replacement on T-504 (Bender Bridge Road) over Elk Lick Run just south of SR 2004 (Mount Davis Road) in Summit Township, Somerset County	PENNDOT	Construction	Somerset	7224	\$1,061,600	\$1,061,600	\$0
23532	24th Street Bridge	Bridge replacement on 24th Street over Seese Run in Windber Borough, Somerset County.	PENNDOT	Final Design	Somerset	7422	\$144,000	\$144,000	\$0
23532	24th Street Bridge	Bridge replacement on 24th Street over Seese Run in Windber Borough, Somerset County.	PENNDOT	Utility	Somerset	7422	\$20,000	\$20,000	\$0
23532	24th Street Bridge	Bridge replacement on 24th Street over Seese Run in Windber Borough, Somerset County.	PENNDOT	Right of Way	Somerset	7422	\$20,000	\$20,000	\$0
88571	PA26/36 Culvert Replcmnts	Replacement of culverts on PA 26 and PA 36 over Tributary of Yellow Creek, just north, south and west of intersection of PA 26 and PA 36, in Hopewell Township, Bedford County.	PENNDOT	Construction	Bedford	26	\$(144,476)	\$0	\$0
88524	PA56/SR4028 Intersection	Intersection improvement on PA 56 at the intersection of Old Town Road (State Route 4028) in East St. Clair Township, Bedford County.	PENNDOT	Construction	Bedford	56	\$(34,243)	\$0	\$0
111447	Everett Bus. Dist. Access Improv. Project	Lane Improvements, Sidewalks, Crosswalks, and ADA Accessible Ramps on SR 1044 (Main Street) at the intersection with North River Lane in the Everett Borough, Bedford County.	PENNDOT	Construction	Bedford	1044	\$(18,909)	\$0	\$0
88098	T-575 Cold Spring Road Bridge	Remove and Replace Existing Superstructure with Full Width Construction of bridge on Cold Spring Rd (T-575) over Six Mile Run near the intersection of Six Mile Run Rd (SR 1036) in Broadtop Township, Bedford County	PENNDOT	Final Design	Bedford	7230	\$(120,993)	\$0	\$0

Annual Listing of Obligations Report, Federal Fiscal Year 2023

111789	T-383 Barkley Rd ovr Ltll Wills Crk	Bridge Replacement on T-383 (Barkley Road) over Little Wills Creek near the intersection of SR 3008 (Bard Hollow Road) in Juniata Township, Bedford County.	PENNDOT	Preliminary Engineering	Bedford	7210	\$(28,277)	\$0	\$0
111789	T-383 Barkley Rd ovr Ltll Wills Crk	Bridge Replacement on T-383 (Barkley Road) over Little Wills Creek near the intersection of SR 3008 (Bard Hollow Road) in Juniata Township, Bedford County.	PENNDOT	Final Design	Bedford	7210	\$(103,200)	\$0	\$0
111789	T-383 Barkley Rd ovr Ltll Wills Crk	Bridge Replacement on T-383 (Barkley Road) over Little Wills Creek near the intersection of SR 3008 (Bard Hollow Road) in Juniata Township, Bedford County.	PENNDOT	Utility	Bedford	7210	\$(19,200)	\$0	\$0
111789	T-383 Barkley Rd ovr Ltll Wills Crk	Bridge Replacement on T-383 (Barkley Road) over Little Wills Creek near the intersection of SR 3008 (Bard Hollow Road) in Juniata Township, Bedford County.	PENNDOT	Right of Way	Bedford	7210	\$(19,200)	\$0	\$0
117078	Pipe Replacement from Hurricane Ida on SR 30	Pipe replacement on SR 30 (Segment 0020 Offset 0493) in Licking Creek Township, Fulton County	PENNDOT	Preliminary Engineering	Fulton	30	\$(12,734)	\$0	\$0
112565	PA 655 Under 8ft Culverts	Replacement of under 8ft culverts on SR 655 (Waterfall Road) from Snyder Lane to Appleby Road in Taylor Township, Fulton County.	PENNDOT	Construction	Fulton	655	\$(202,754)	\$0	\$0
112566	Fulton&Huntingdon Co. Under 8ft Clvrts	Replacement of under 8ft culverts on SR 4013 (Wells Valley Road) in Wells Twp, Fulton Co., on SR 35 (Shade Valley Road) in Tell Twp, Huntingdon Co., on SR 350 (Warriors Mark Path Road) in Franklin Twp, Huntingdon Co.	PENNDOT	Construction	Fulton	4013	\$(94,881)	\$0	\$0
105978	US 22 - Mifflin Line to SR 1010	Resurfacing on US Route 22 from Mifflin County Line to Penn Street (SR 1010) in Henderson, Mill Creek and Brady Townships, Huntingdon County.	PENNDOT	Construction	Huntingdon	22	\$(387,701)	\$0	\$0

Annual Listing of Obligations Report, Federal Fiscal Year 2023

88516	US22/PA829 Intsctn Imp	Intersection improvement and slope stabilization on US Route 22 at the intersection of PA 829 in Henderson Township and along the westbound lane of US Route 22 in Brady Township, Huntingdon County.	PENNDOT	Construction	Huntingdon	22	\$(3,375)	\$0	\$0
99322	PA 26 - US 22 to Oneida Twp Line	Resurfacing on PA 26 from US Route 22 interchange to Oneida Township Line in Huntingdon Borough and Smithfield Township, Huntingdon County.	PENNDOT	Construction	Huntingdon	26	\$(121,222)	\$0	\$0
106420	Hill Valley Creek Bridge	Replacement of structure carrying South Moore Street over Hill Valley Creek near the intersection of Liverpool Alley in Mount Union Borough, Huntingdon County.	PENNDOT	Preliminary Engineering	Huntingdon	7411	\$(106,938)	\$0	\$0
106420	Hill Valley Creek Bridge	Replacement of structure carrying South Moore Street over Hill Valley Creek near the intersection of Liverpool Alley in Mount Union Borough, Huntingdon County.	PENNDOT	Construction	Huntingdon	7411	\$(83,285)	\$0	\$0
23434	Dark Shade Creek Bridge	Replacement of structure carrying PA 160 over Dark Shade Creek near the intersection of Cedar Street in Central City Borough, Somerset County.	PENNDOT	Construction	Somerset	160	\$(125,667)	\$0	\$0
23620	219 Garrett Erthwk Ln Itm	Southern terminus of 4-lane in Somerset Township through Brothers Valley Township to the northern terminus of the Meyersdale Bypass near Pony Farms in Summit Township.	PENNDOT	Construction	Somerset	219	\$(9,835)	\$0	\$0
96607	PA 403 - Wilbur Rd to US 219	Resurfacing on PA 403 from Wilbur Road (SR 1012) to Davidsville Interchange in Shade, Quemahoning, Paint, and Conemaugh Townships, Hooversville and Benson Boroughs, Somerset County	PENNDOT	Construction	Somerset	403	\$(64,656)	\$0	\$0
92700	PA985 Trib Bens Crk Br	Replacement of culvert carrying PA 985 over Tributary to Bens Creek near the intersection of Brehm Road (T-586) in Jenner Township, Somerset County.	PENNDOT	Construction	Somerset	985	\$(126,589)	\$0	\$0

Annual Listing of Obligations Report, Federal Fiscal Year 2023

91671	Brotherton Rd to Berlin/Somerset Interchange	Resurfacing on US Route 219 from Brotherton Road (SR 1003) to Craig Road (T-732) and on Berlin Plank Road (SR 3041) in Brothers Valley and Somerset Townships and Somerset Borough, Somerset County. Rehabilitation of three structures carrying US Route 219 at the following locations in Brothers Valley Township, Somerset County: 1) Over Miller Run near the intersection of Plank Road (T-433) 2) Over Tributary to Miller Run near the intersection of Short Plank Road (T-450) 3) Over Miller Run approximately 0.25 miles south of the intersection of Cinder Road (T-621)	PENNDOT	Construction	Somerset	2047	\$(398,648)	\$0	\$0
105998	Rockwood Trib Coxes Creek #2	Replacement of structure carrying Water Level Road (SR 3015) over Tributary to Coxes Creek northeast of the Coalyard Road (T-430) intersection in Milford Township, Somerset County.	PENNDOT	Construction	Somerset	3015	\$(2,716)	\$0	\$0
* Negative amounts in the obligation column are a result of de-obligating unused funds for a project. De-obligation is the release of funds due to either the cancelation or completion of a project.							\$64,688,500	\$71,110,404	\$4,192,396